

BOUCTOUCHE DUNES (Eastern New Brunswick)

Distance: Boardwalk: 1.7 km return

Beach: 22.5 km return

Difficulty: Easy



GETTING THERE:

From Moncton, follow route 11 and turn off onto route 515 which soon becomes route 475.

From the exit of highway 11, drive 9.2 km until you see the Bouctouche – Irving Eco Centre sign and turn left into a parking area.

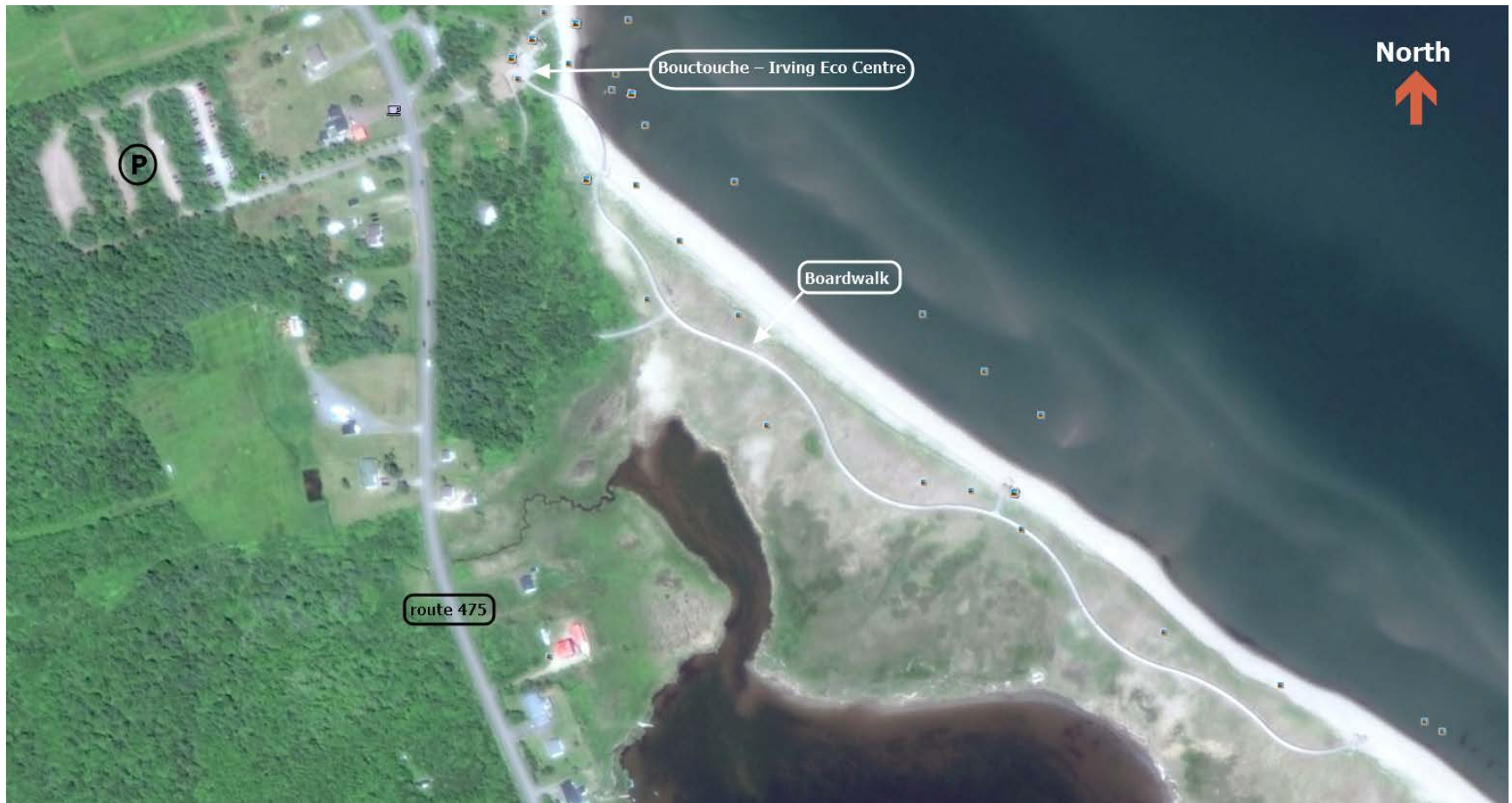
Park your car and walk out the road and across highway 475 to the eco center and the boardwalk.

THE TRAIL:

On a hot day in summer, this walk is hard to beat, but it's also nice on a breezy day in the Fall.

Walk to the end of the boardwalk, then continue on for as far you want, or 11 kilometers before turning around.

Dave Suttie, Nov 2017



Bouctouche - Irving Eco Centre

Boardwalk

route 475

P

North
↑