

CURRANT BROOK FALLS

***also includes Pinder Falls, Miliseat Falls**

From NB-105 near Nacawic, take NB-605 north towards Temperancevale.

Pinder Falls:

At 4.4 km you will cross a bridge, with Pinder Falls or dam on the right.

Park after the bridge and walk back to view this old dam with some of the old water wheel machinery still visible.

Miliseat Falls:

Continue 200 meters past the bridge to an intersection, and continue straight onto NB595

Drive 3.1 km through Temperancevale and turn right onto the Nortondale Road.

Drive 4.8 km to an intersection.

Turn left onto NB-585 and drive 3.3 km to Miliseat Falls on the Right.*park just past the bridge near a yellow turn sign.

Currant Brook Falls: (46° 7.276'N 67° 15.816'W)

Reverse direction and drive 3.3 km back to the intersection.

Turn left and continue straight on NB-585 for 700 meters and cross a bridge.

Drive 400 meters and park on the right near the first dirt road you see.

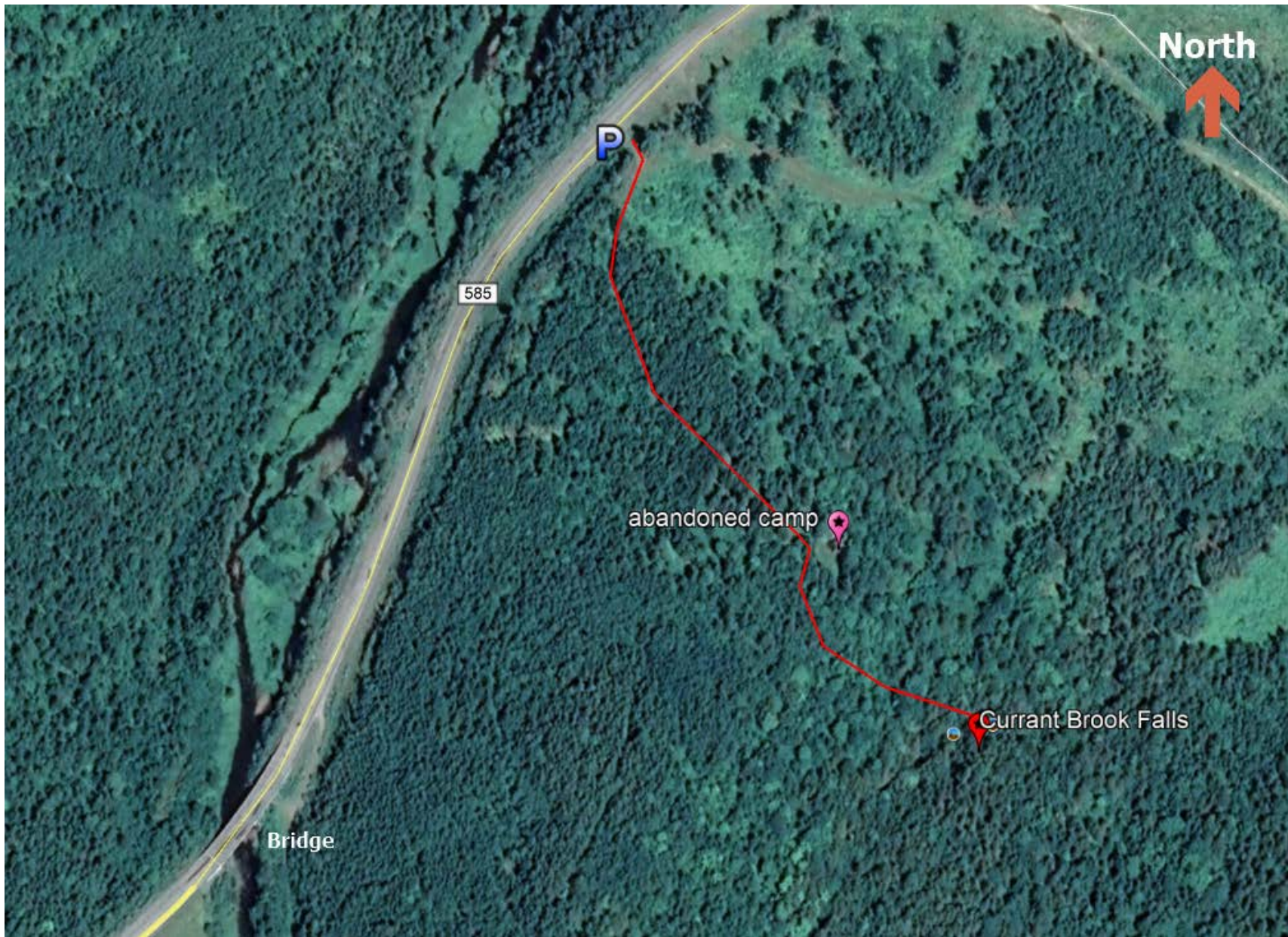
*there are 3 roads in close proximity, so be sure to take the first one, the one that turns right towards the edge of the clear cut.

Walk in the road for about 300 meters until you see an abandoned camp in a clearing.

Go to the right side of the clearing and follow an old road for a short ways down to a wet area.

Cross the wet spot on an old pallet, and immediately turn right and follow a red flagged trail a short distance to Currant Brook Falls.





North



P

585

Bridge

abandoned camp



Currant Brook Falls

