

DEVIL'S OVEN CAVE (Minto)

Distance: 840 meters return

Difficulty: Moderate

Caution:

The Tracy Rd. is poorly plowed, slippery in winter and muddy in the spring.

There is a significant hill just before the parking spot that will be a challenge if the road is icy.

Newcastle Creek is steep banked so in winter you must walk on the ice to approach the cave.

Beware of thin ice!

In summer, the creek bank is too steep and overgrown to travel, so follow a flagged trail up over the hill.



Getting There:

From the Tim Horton's in Minto, continue 4.65 km east on highway 10 (Pleasant Street) to Northside Drive on the left.

Turn left onto Northside Drive and drive 1.7 km to a bridge.

Cross the bridge and drive 160 meters to the Tracy Rd, on the right.

Turn right onto Tracy Rd. and drive 3.42 km and park either before or after the bridge. (46° 8.293'N 66° 4.883')

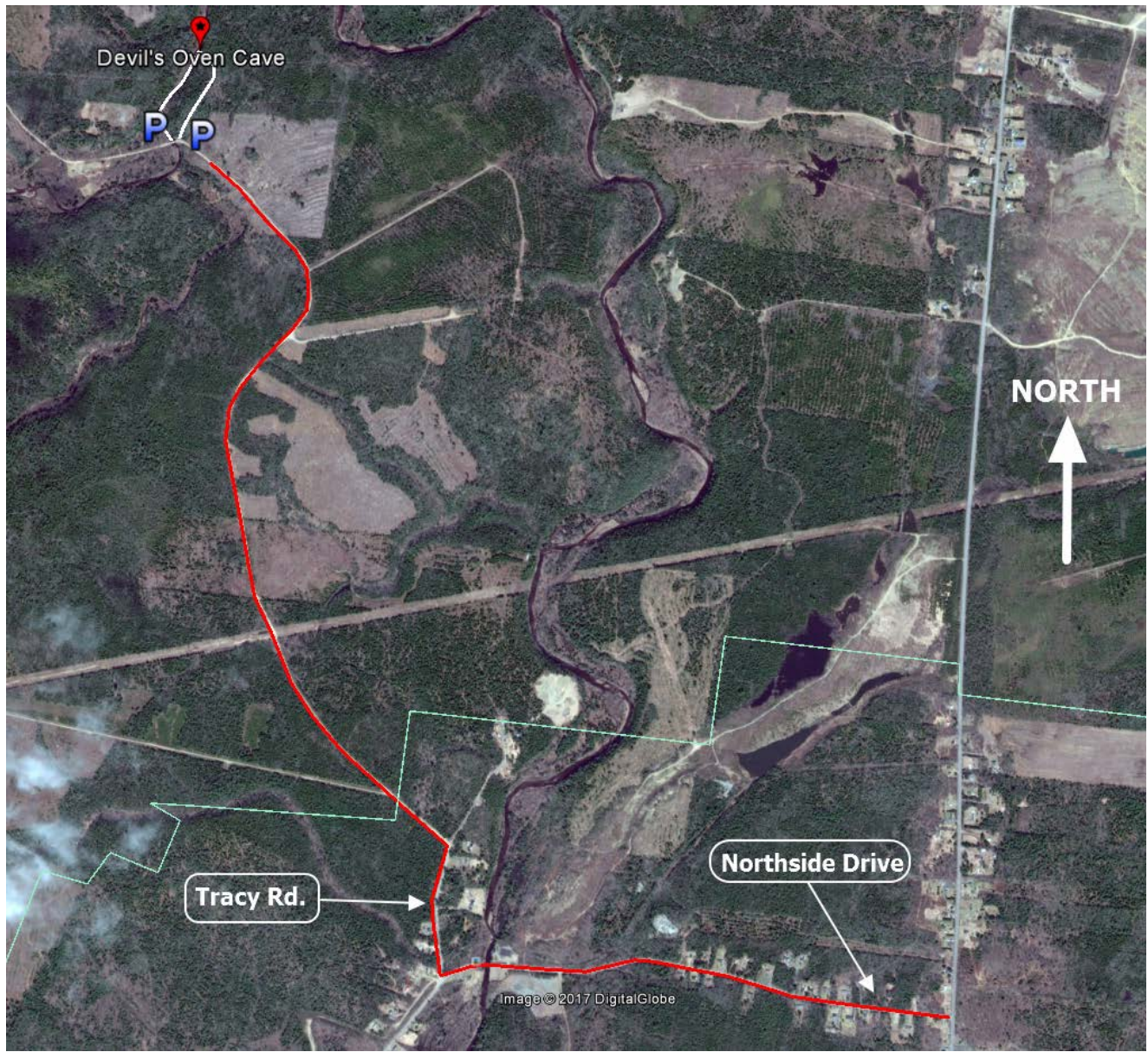
(WINTER)

Walk to the bridge, turn right and walk down Newcastle Creek for 420 meters to Devil's Oven cave.

(SUMMER - FALL)

The cave is slightly underwhelming without the ice, but if you wish to see it, follow a flagged trail that starts a few meters before the bridge. The trail steeply ascends a ridge and ultimately loops around to approach the cave.

Dave Suttie, Nov 2017





Devil's Oven Cave

Winter Route

Summer - Fall Route

400 meters

P

P

Tracy Rd.

Image © 2017 DigitalGlobe