

## GREENSNAKE TRAIL (Alma)

**Distance:** 8 km return

**Difficulty:** Moderate (mountain bike trail)

### **GETTING THERE:**

Cross the bridge in Alma and drive about 230 meters to School Street on the left.

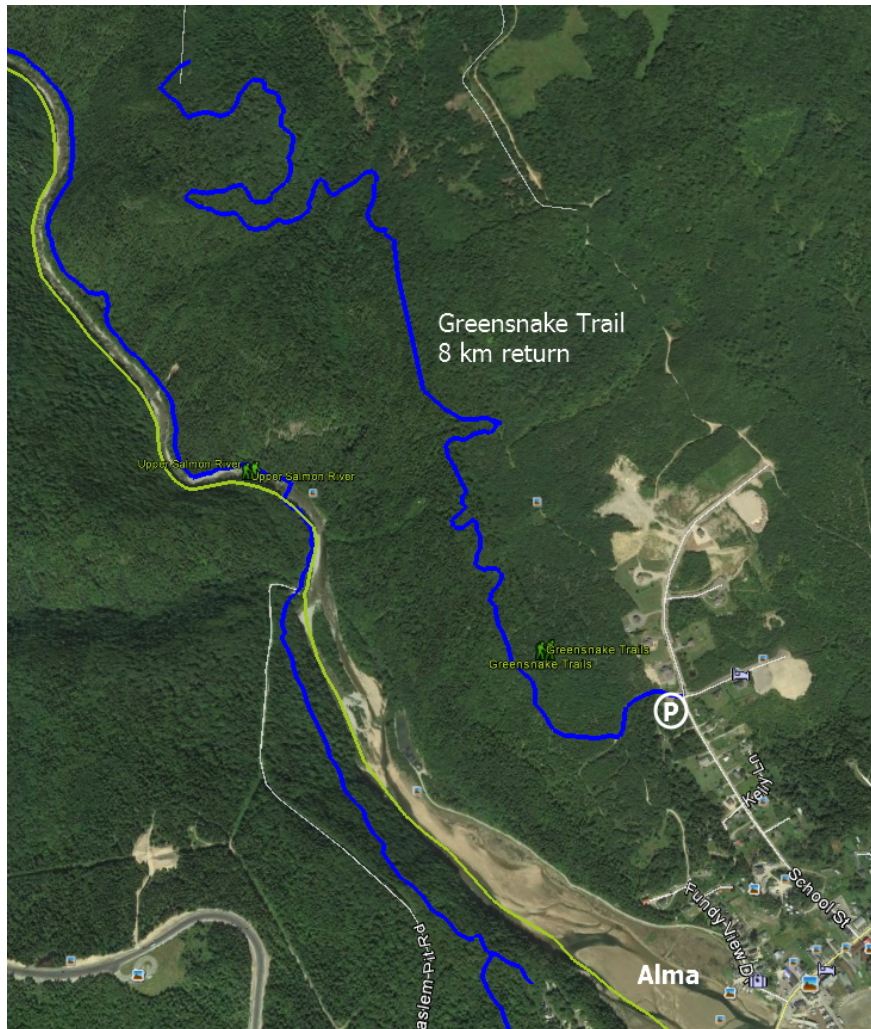
Drive out School Street for 630 meters and park in the open area on the left.

The connector to the Greensnake trail starts on the right side of the parking area.



### **THE TRAIL:**

This is a mountain bike trail, so hikers should be prepared to quickly get out of the way.



Dave Suttie, Nov 2017