

## MOOSE MOUNTAIN



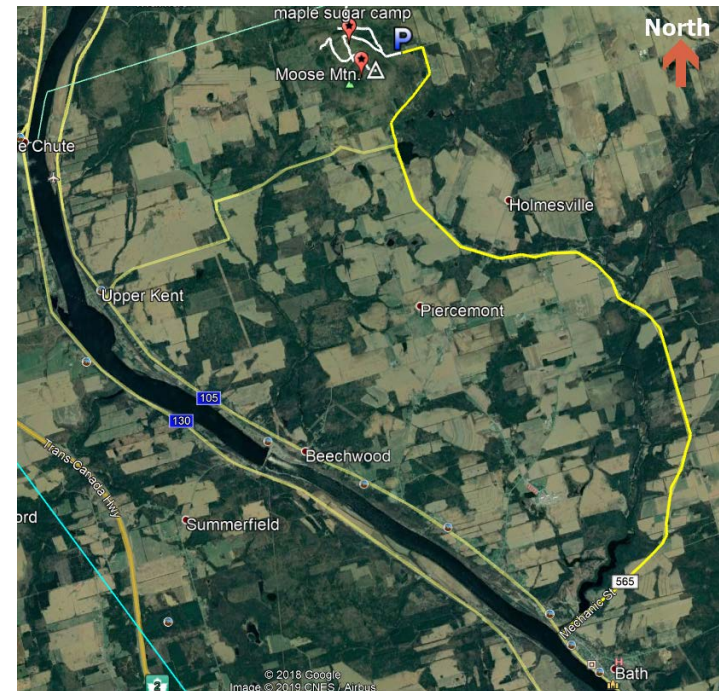
**Distance:** 4.5 km return

**Time:** 3 hours

**Difficulty:** Moderate

### **Getting There:**

Take Highway 105 along the Saint John River to Bath, NB. Turn north-east onto Route 565 and drive 13 km to an intersection at Moose Mountain Lake. Bear right onto Moose Mountain Road and drive 2 km to Maybee Road. Turn left, drive 400 m and park across from a farm.



**The Trail:**

Walk straight up the old road for about 300 meters, and then follow the trail north-west for about 1 km to where it turns sharply left (south-east.) After another 200 meters the trail levels out momentarily and there will be a maple sugar camp on the left. Continue on uphill for another 250 meters to a trail intersection. Turn left and walk about 650 meters up to the summit.

