

Wallace Falls / Martin Head Look Off / Telegraph Brook / Quiddy River / Martin Head Beach

QUIDDY RIVER (near the Fundy Footpath)

Getting There:

Begin at Tim Hortons 638 Main St, Sussex, NB.

Turn LEFT and head east on Main St/NB-121 E toward Summer St for 2.4 km.

Turn slightly right onto Needle St/NB-111 W (signs for Saint Martins) and drive 550 m.

Continue straight onto Dutch Valley Rd and drive 1.3 km where the road becomes the Waterford Rd.

Continue straight onto Waterford Rd and drive 10.4 km.

Turn slightly left onto Creek Rd and drive 9.8 km to Adair's Wilderness Lodge.

From Adair's Lodge, drive 1.5 km, then go LEFT at the fork onto Little Salmon River Road.

Drive 1 km then go STRAIGHT (slightly RIGHT) at the fork.

Drive 1.8 km then go LEFT at the fork onto Cross Road.

Drive 3.6 km on the Cross Road for 1.4 km to an intersection.

Wallace Falls: (45° 33.939'N 65° 13.973'W)

Take the LEFT fork at the intersection, and drive 950 meters to the atv bridge over the Quiddy River.

DO NOT CROSS THE BRIDGE, but walk down a blue blazed trail for 200 meters, then take a 70 meter orange blazed trail on the left. There are some very steep stairs leading down to the river and the falls.

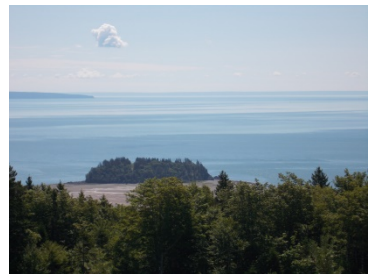
***the blue blazes mark the Quiddy River Trail.**



Martin Head Look Off: (45° 30.357'N 65° 12.468'W)

Return from the bridge above Wallace Falls for 950 meters to the intersection, and turn left onto another gravel road.

Drive south for 7.3 km to see this awesome view of the Bay of Fundy.

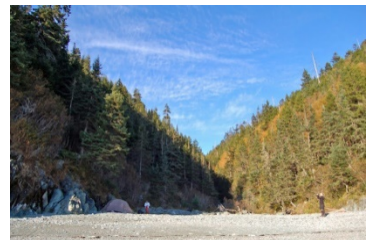


Telegraph Brook Campsite: (45° 29.397'N 65° 13.104'W)

From the Martin Head Look off, walk on down the road for 1 km where it meets the Fundy Footpath.

Turn right onto the footpath and follow it for about 1.5 km to Telegraph Brook.

***there are campsites near the beach at Telegraph Brook.**



Quiddy River Campsite: (45° 30.465'N 65° 11.620'W)

From the Martin Head Look off, walk down the road 1 km to where it meets the Fundy Footpath. Turn left and walk 2.2 km to the Quiddy River. There is a campsite on the western shore near where the Fundy Footpath crosses the river.



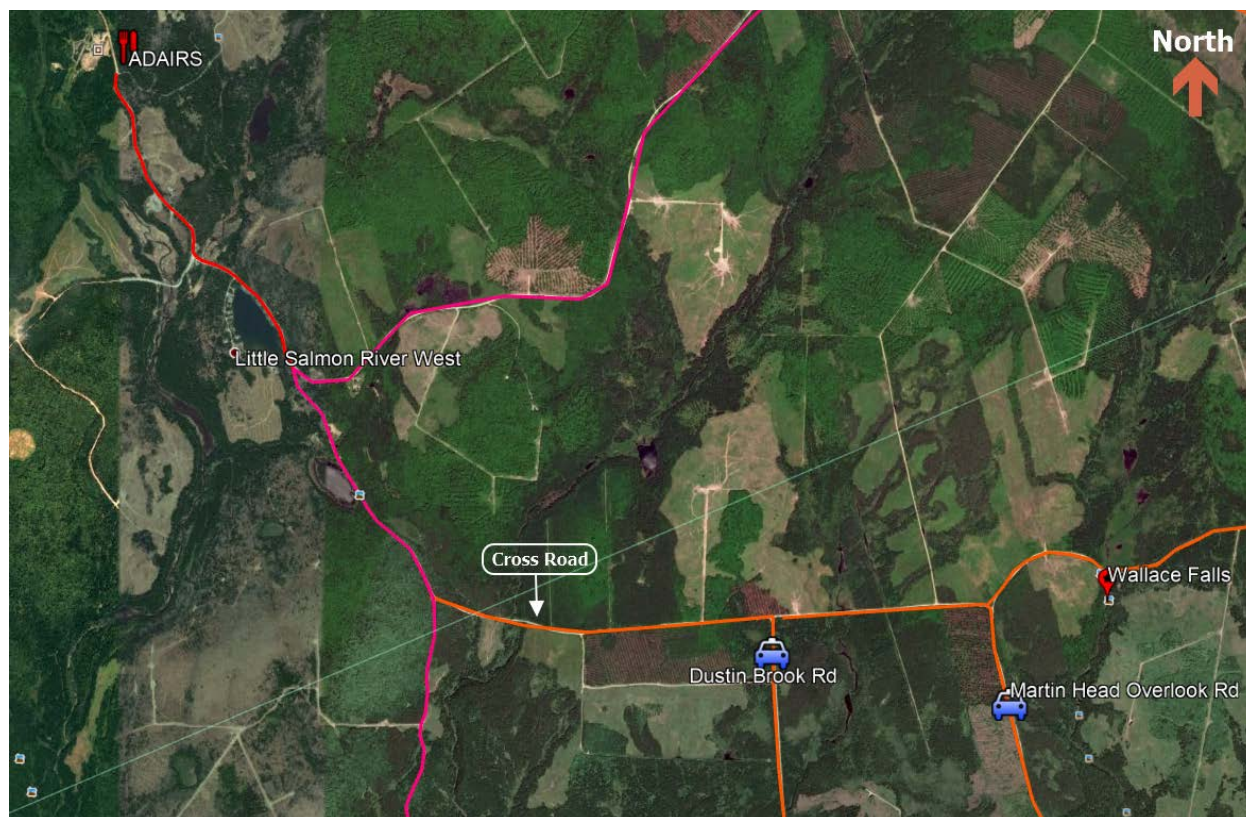
Martin Head Beach: (45° 29.762'N 65° 11.641'W)

From the Quiddy River campsite, cross the river and follow the Fundy Footpath east for about 2 km to a 150 meter long side trail on the right leading to the beach.

Dave Suttie, Nov 2017



Area Roads



Area Roads - detail



Wallace Falls



Martin Head Lookoff, Telegraph Brook, Quiddy River Campsite, Martin Head Beach

