

ROCKY BROOK STAIRS GORGE (Stanley area)

Distance: about 5 km return

Difficulty: Moderate / Challenging due to slippery rocks in the gorge

Caution:

The rocks are moss covered and very slippery in the gorge.

The gorge walls are high and unstable in some places.

Getting There:

From the corner in Stanley, drive north on route 107 towards Cross Creek for 3.69 km.

Turn left onto the Williamsburg Road.

Drive about 13.3 km to a gravel side road on the left. (N 46 21.957 W 66 51.881)

Carefully drive 6.75 km along this road to a narrower side road on the left. (N 46 20.218 W 66 56.392)

Park and walk in this road 1.5 km to where you see a large wet area on the left...and the main trail veers left.

At this point, locate the less significant trail on the right. (N 46 19.457 W 66 56.081)

Turn right onto this trail, and walk 400 meters to a flagged trail on the right. (N 46 19.457 W 66 56.082)

Follow the orange flagging tape for 280 meters to Rocky Brook. (N 46 19.121 W 66 56.049)



The Trail:

The flagged trail takes you to the upper end of the gorge where you can easily walk down the bank to the brook.

Carefully follow the brook down through the gorge over very slippery rocks for about 360 meters to where the left cliff flattens out.

(N 46 19.108 W 66 55.832)

At this point, you can walk up the left slope to the cliff top and then walk upstream to the flagged trail and then out.

Dave Suttie, Nov 2017

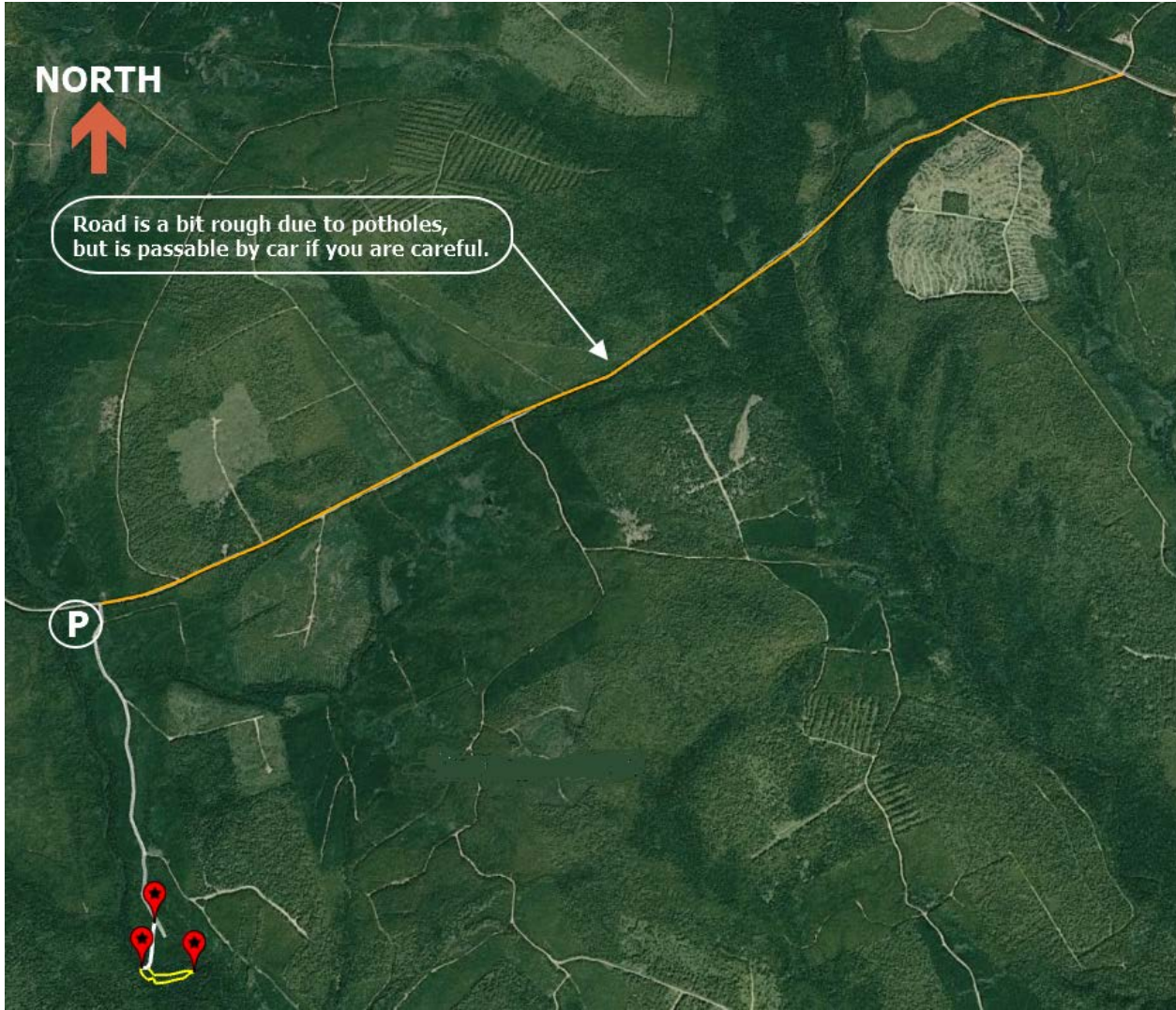


NORTH



Road is a bit rough due to potholes,
but is passable by car if you are careful.

P





NORTH



Rocky Brook Stairs Gorge

